

Table of Contents

1	System Requirements and Installation.....	2
	System Requirements	2
	Installation	2
	Uninstalling the Software	2
2	Tutorial.....	3
	What does Excel2HTML Interactive do?	3
	Defining Export Options	3
	Defining Web Page Texts	4
	Defining Message Texts	5
	Converting	6
	Saving and Checking	7
	Using created page	7
3	Windows XP Themes.....	10
	Adding Windows XP Themes Support	10
4	Getting Help.....	12
	Help	12
	Sending Feedback to Nimble Software	13

1 Nimble Software Excel2HTML Interactive

1.1 System Requirements and Installation

1.1.1 System Requirements

Nimble Software Excel2HTML Interactive runs on Microsoft Windows compatible computers. We recommend any of the following versions of Microsoft Windows:

Any of the following versions of Microsoft Windows:

- Microsoft Windows 98
- Microsoft Windows Me
- Microsoft Windows 2000
- Microsoft Windows XP

Any of the following versions of Microsoft Office:

- Microsoft Office 2000
- Microsoft Office XP
- Microsoft Office 2003
- Microsoft Office 2007

1.1.2 Installation

Excel2HTML Interactive is shipped in a single file named `excel2html_interactive_setup.exe`.

1. Close all running instances of Excel.
2. Save the file to a temporary folder and run `excel2html_interactive_setup.exe`.
3. Simply double-click on this file and answer a few questions to install Excel2HTML Interactive on your computer.

Once Excel2HTML Interactive is installed, you can see an additional toolbar in Excel.

1.1.3 Uninstalling the Software

If you wish to uninstall Excel2HTML Interactive, follow these instructions:

1. Close all running instances of Excel.
2. Click the Start menu from the taskbar and select Settings/Control Panel.
3. Double-click on Add/Remove Programs.
4. Select Excel2HTML Interactive from the list and click the Add/Remove button.
5. Confirm that you want to uninstall Excel2HTML Interactive.

1.2 Tutorial

1.2.1 What does Excel2HTML Interactive do?

Excel2HTML Interactive is a dramatically new type of export from Excel to the Internet. After exporting the program, data search and sort abilities are added to a plain HTML page. Most importantly, the sorting is data-type sensitive and the search can be accomplish via certain columns or all tables. To take advantage of all these features, one does not need to have a certain database at the web site, to know any programming language or to hire programmers to write and update database driven data at the web site. It is sufficient to have a free web host with the minimum abilities and one can simply copy the generated web page to the site.

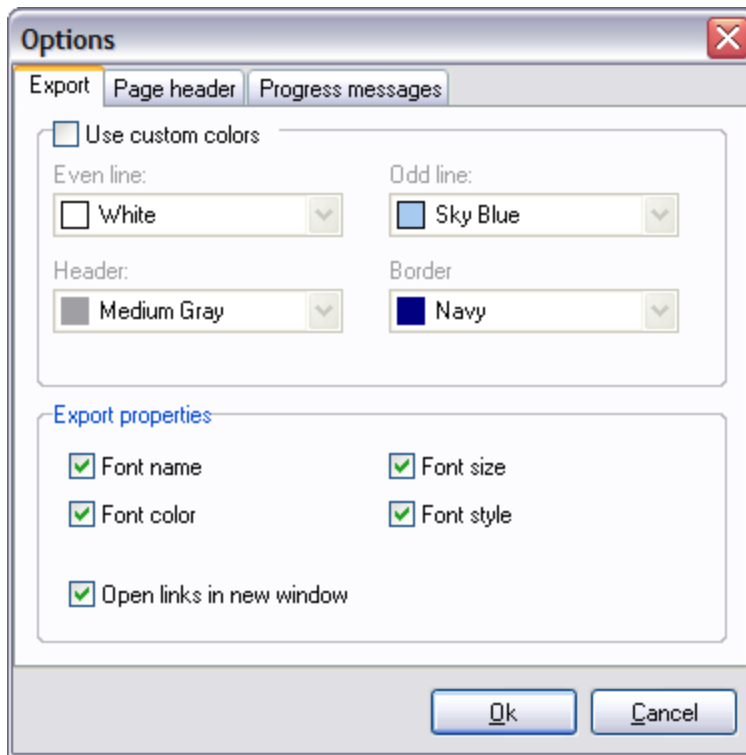
Benefits

- Search within certain columns and all data
- Data-type sensitive column sorting
- No database required
- No additional programming or any technical knowledge required
- Search engine friendly
- Browser compatibility
- Flexible export options
- Automatic data-type detection
- User friendly

1.2.2 Defining Export Options

Excel2HTML Interactive allows one to define the final outlook of the generated web page. By default, the program exports Excel data as is, including all the defined colors and formatting. To define your own settings, open the Options dialog.





To use custom colors as the background:

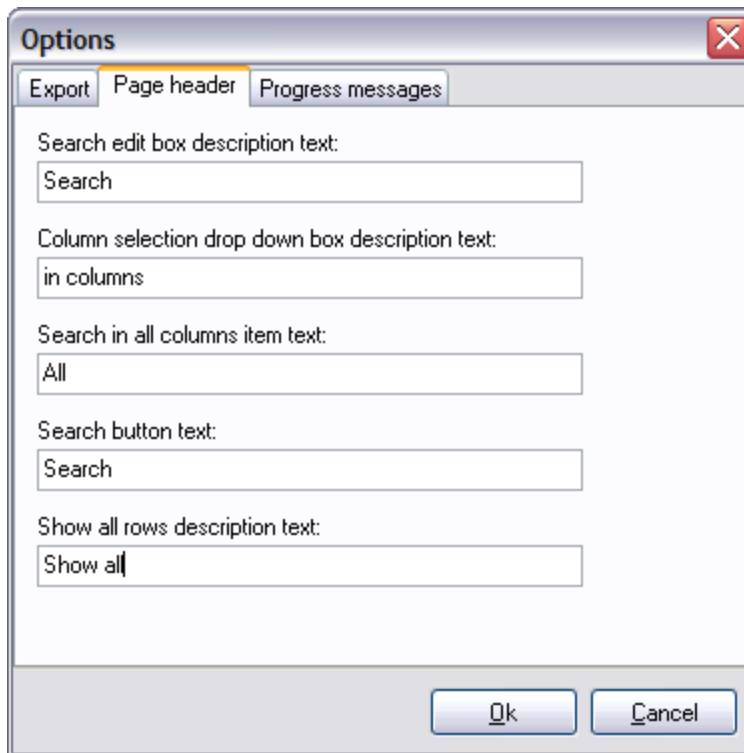
- Select Use custom colors. Use custom colors
- Then select appropriate colors for the table.

To save default Excel cells formatting leave Font name, Font size, Font color, Font style check boxes selected. When the check boxes are cleared, then default web page settings will be used.

When a table has Internet links in a column there are two possibilities to export. To open links in a new browser window select Open links in new window.

1.2.3 Defining Web Page Texts

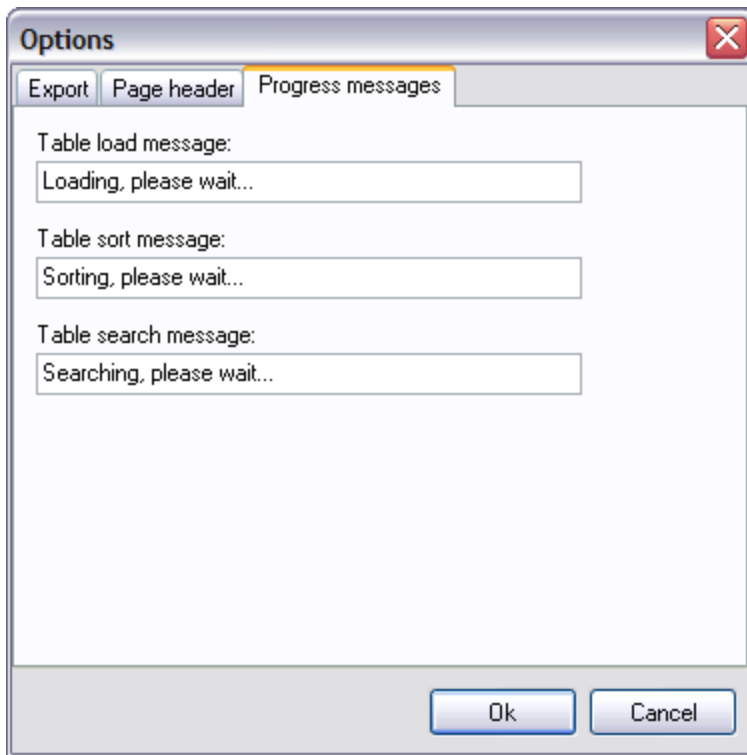
There are several controls at the exported web page such as search edit box, columns list, etc. Each control has a description text near it or inside it. If it is required to change the text to your own or to translate to a language different from English:



1. Open Options dialog box
2. Select Page header tab
3. Change appropriate text to your own

1.2.4 Defining Message Texts

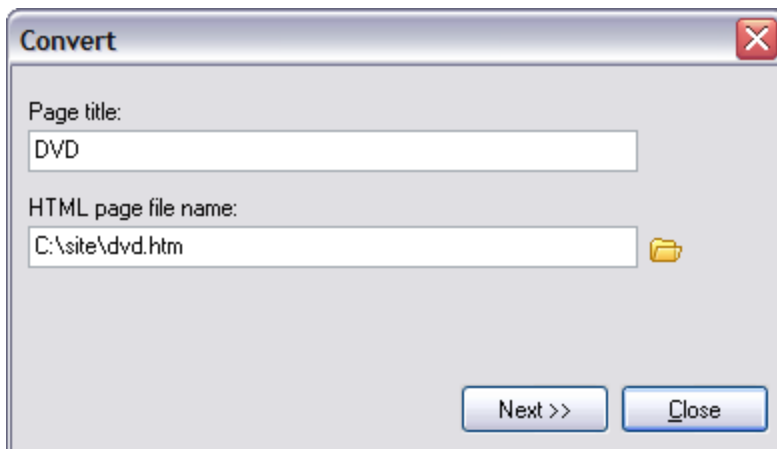
Each action at the web page that may take longer than a moment shows a progress dialog with the information message regarding what the program is currently doing. These messages are defined for load, sort and search events. The texts for these messages are also customizable.



1. Open Options dialog
2. Open Progress messages tab
3. Change appropriate text to your own.

1.2.5 Converting

To start converting simply select a table (an area at the sheet) and click the Convert button.



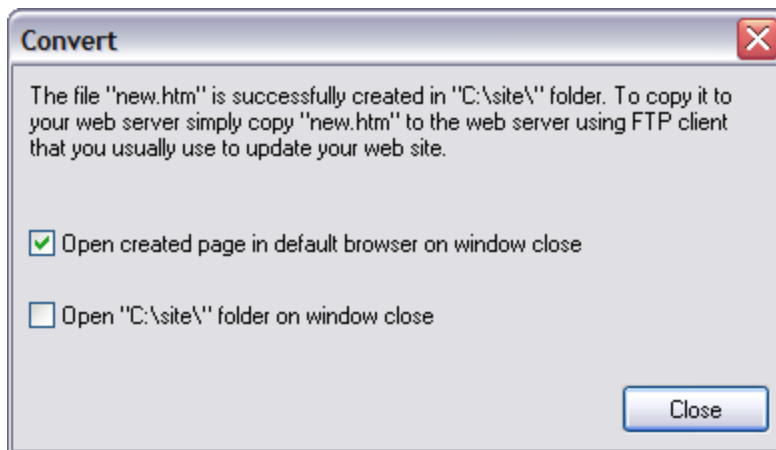
The Convert wizard will be open. At the first wizard page the wizard will suggest a name for

the HTML file name and page title. The suggested name and title are based in the sheet name.

If the name and title are appropriate, then click Next to start conversion; in the other case, select appropriate names.

1.2.6 Saving and Checking

When the conversion process is completed the wizard will show the last page with the detailed information on how to deploy the generated web page.



There are also two additional options at the last page. To open the created HTML page in the default browser select Open created page in the default browser on windows close. To open the folder where the page is saved, select Open folder on windows close.

Both selections will take action on close button click.

1.2.7 Using created page

For example, we created a simple price list that consists of two columns.

Search in columns All

MP3 players	
Apple iPod shuffle 512Mb (M9724B/A)	98
Apple iPod shuffle 1Gb (M9725B/A)	129
Apple iPod 1Gb Nano White (MA350ZP/A)	177
Apple iPod 1Gb Nano Black (MA352ZP/A)	177
Apple iPod 2Gb Nano White (MA004LL/A)	171
Apple iPod 4Gb Nano White (MA005LL/A)	228
Apple iPod 4Gb Nano Pink (MA489LL/A)	228
Apple iPod 4Gb Nano Blue (MA428LL/A)	228
Apple iPod 4Gb Nano Silver (MA426LL/A)	228
Apple iPod 4Gb Nano Green (MA487LL/A)	228
Apple iPod 60Gb Video White (MA003LL/A)	516
Apple iPod 80Gb Video White	471
Apple iPod 80Gb Video Black	471
MP3-CD плеер BBK PV410 w/CD/VCD Player	66
Creative ZEN Micro 6Gb Black	252
Creative ZEN Micro 6Gb Silver	252
Creative ZEN Micro 6Gb White	269
Creative MuVo Slim 512MB FM SI	139

Now we want to search only for iPod players. Simply type ipod in the search box and press Enter or click the Search button.

Note: search text is case insensitive.

Search in columns All [Show all](#)

MP3 players	
Apple iPod shuffle 512Mb (M9724B/A)	98
Apple iPod shuffle 1Gb (M9725B/A)	129
Apple iPod 1Gb Nano White (MA350ZP/A)	177
Apple iPod 1Gb Nano Black (MA352ZP/A)	177
Apple iPod 2Gb Nano White (MA004LL/A)	171
Apple iPod 4Gb Nano White (MA005LL/A)	228
Apple iPod 4Gb Nano Pink (MA489LL/A)	228
Apple iPod 4Gb Nano Blue (MA428LL/A)	228
Apple iPod 4Gb Nano Silver (MA426LL/A)	228
Apple iPod 4Gb Nano Green (MA487LL/A)	228
Apple iPod 60Gb Video White (MA003LL/A)	516
Apple iPod 80Gb Video White	471
Apple iPod 80Gb Video Black	471

After this we want to see the iPod player with the lowest price. Click the column header with the price and now the prices are sorted.

Search in columns All [Show all](#)

MP3 players	
Apple iPod shuffle 512Mb (M9724B/A)	98
Apple iPod shuffle 1Gb (M9725B/A)	129
Apple iPod 2Gb Nano White (MA004LL/A)	171
Apple iPod 1Gb Nano White (MA350ZP/A)	177
Apple iPod 1Gb Nano Black (MA352ZP/A)	177
Apple iPod 4Gb Nano White (MA005LL/A)	228
Apple iPod 4Gb Nano Green (MA487LL/A)	228
Apple iPod 4Gb Nano Silver (MA426LL/A)	228
Apple iPod 4Gb Nano Blue (MA428LL/A)	228
Apple iPod 4Gb Nano Pink (MA489LL/A)	228
Apple iPod 80Gb Video Black	471
Apple iPod 80Gb Video White	471
Apple iPod 60Gb Video White (MA003LL/A)	516

Click the column again and the column is sorted in the opposite order and the most expensive iPod is now at the top of the list.

Search in columns All [Show all](#)

MP3 players	
Apple iPod 60Gb Video White (MA003LL/A)	516
Apple iPod 80Gb Video Black	471
Apple iPod 80Gb Video White	471
Apple iPod 4Gb Nano Blue (MA428LL/A)	228
Apple iPod 4Gb Nano Pink (MA489LL/A)	228
Apple iPod 4Gb Nano Silver (MA426LL/A)	228
Apple iPod 4Gb Nano Green (MA487LL/A)	228
Apple iPod 4Gb Nano White (MA005LL/A)	228
Apple iPod 1Gb Nano White (MA350ZP/A)	177
Apple iPod 1Gb Nano Black (MA352ZP/A)	177
Apple iPod 2Gb Nano White (MA004LL/A)	171
Apple iPod shuffle 1Gb (M9725B/A)	129
Apple iPod shuffle 512Mb (M9724B/A)	98

Click the column again and the list will return to the original unsorted state again.

Now to show the list and the other players, simply click the Show all link. Another way to do it is to clear the search text and to press enter.

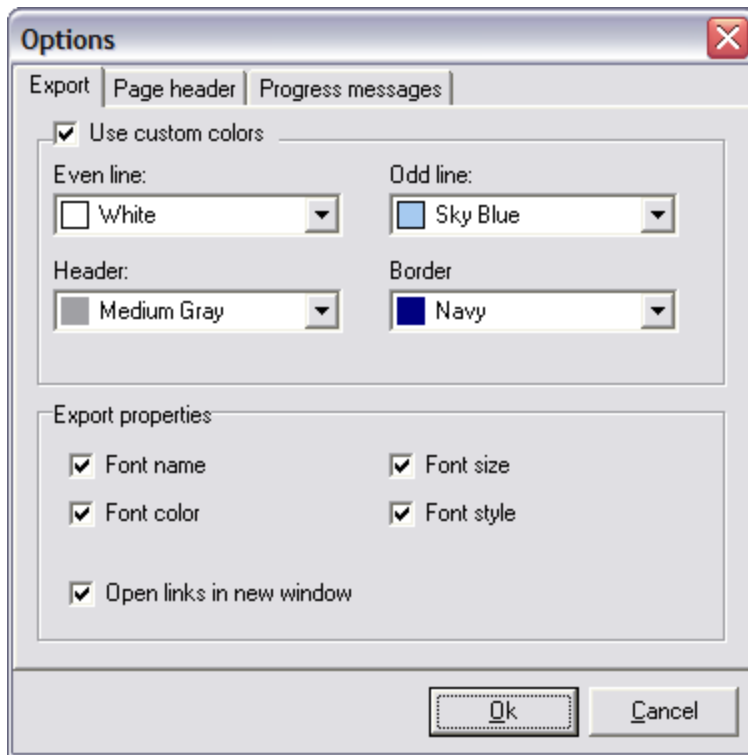
Search in columns All

MP3 players	
Apple iPod shuffle 512Mb (M9724B/A)	98
Apple iPod shuffle 1Gb (M9725B/A)	129
Apple iPod 1Gb Nano White (MA350ZP/A)	177
Apple iPod 1Gb Nano Black (MA352ZP/A)	177
Apple iPod 2Gb Nano White (MA004LL/A)	171
Apple iPod 4Gb Nano White (MA005LL/A)	228
Apple iPod 4Gb Nano Pink (MA489LL/A)	228
Apple iPod 4Gb Nano Blue (MA428LL/A)	228
Apple iPod 4Gb Nano Silver (MA426LL/A)	228
Apple iPod 4Gb Nano Green (MA487LL/A)	228
Apple iPod 60Gb Video White (MA003LL/A)	516
Apple iPod 80Gb Video White	471
Apple iPod 80Gb Video Black	471
MP3-CD плеер BBK PV410 w/CD/VCD Player	66
Creative ZEN Micro 6Gb Black	252
Creative ZEN Micro 6Gb Silver	252
Creative ZEN Micro 6Gb White	269
Creative MuVo Slim 512MB FM SI	139

1.3 Windows XP Themes

1.3.1 Adding Windows XP Themes Support

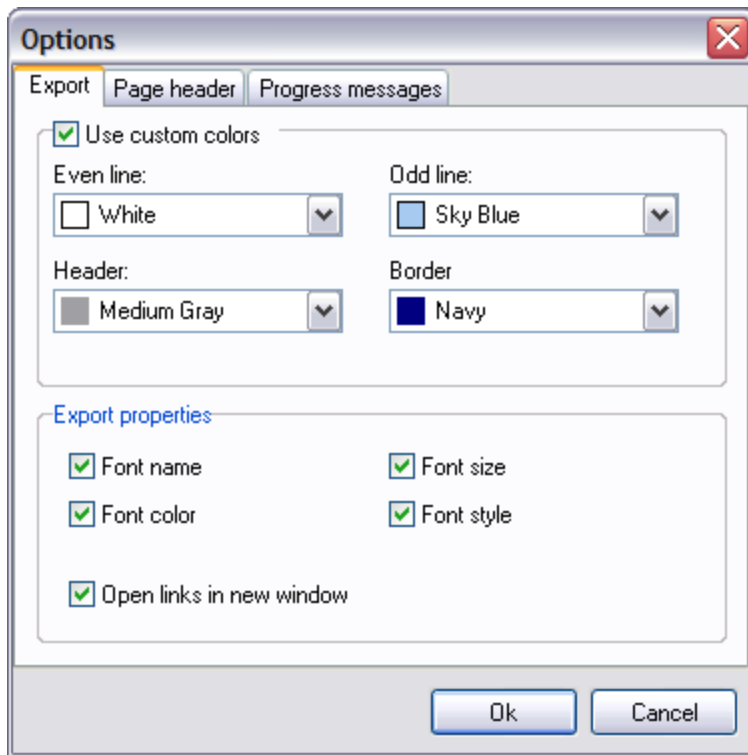
By default, the add-in dialog boxes and windows in Excel do not use Windows XP themes and look old-style.



To add themes support:

1. Close Excel.
2. In the add-in folder find file Excel.exe.manifest.
3. Copy Excel.exe.manifest to the Excel folder, where EXCEL.EXE located.
4. Start Excel.

After this add-in, dialog boxes and windows will use Windows XP themes and will look like this:



Note: This applies to add-ins developed by Nimble Software but we do not guarantee that all installed add-ins will support themes.

1.4 Getting Help

1.4.1 Help

The help file that comes with Excel2HTML Interactive contains complete documentation of all aspects of the program.

To display Help:

Choose Start » Programs » Excel2HTML Interactive » Help or press F1

-or-

Click the Help command in the Excel2HTML Interactive toolbar

1.4.2 Sending Feedback to Nimble Software

We love to hear from our customers. Send us your suggestions, ideas, and bug reports about Excel2HTML Interactive to support@nimblesoftware.com. Please include your e-mail address so that we can contact you if we have any questions.

If you want to get the latest information about Excel2HTML Interactive, please visit the Excel2HTML Interactive Homepage on the web.
