

Table of Contents

1	System Requirements and Installation.....	2
	System Requirements	2
	Installation	2
	Uninstalling the Software	2
2	Tutorial.....	2
	What does Search From Office do?	2
	Searching from Excel	3
	Searching from Word	4
3	Getting Help.....	5
	Help	5
	Sending Feedback to Nimble Software	5

1 Search From Office

1.1 System Requirements and Installation

1.1.1 System Requirements

Nimble Software Search From Office runs on Microsoft Windows compatible computers. We recommend any of the following versions of Microsoft Windows:

Any of the following versions of Microsoft Windows:

- Microsoft Windows 98
- Microsoft Windows Me
- Microsoft Windows 2000
- Microsoft Windows XP

Any of the following versions of Microsoft Office:

- Microsoft Office 2000
- Microsoft Office XP
- Microsoft Office 2003

1.1.2 Installation

Search From Office is shipped in a single file named `search_from_office_setup.exe`.

1. Close all running instances of Word and Excel.
2. Save the file to a temporary folder and run `search_from_office_setup.exe`.
3. Simply double-click on this file and answer a few questions to install Search From Office on your computer.

Once Search From Office is installed, you can see an additional toolbar in Word and Excel.

1.1.3 Uninstalling the Software

If you wish to uninstall Search From Office, follow these instructions:

1. Close all running instances of Word and Excel.
2. Click the Start menu from the taskbar and select Settings/Control Panel.
3. Double-click on Add/Remove Programs.
4. Select Search From Office from the list and click the Add/Remove button.
5. Confirm that you want to uninstall Search From Office.

1.2 Tutorial

1.2.1 What does Search From Office do?

Search From Office is a productivity add-in for Microsoft Office that makes it simple to find certain bits of text, word, or cells on the Internet.

Whenever you need to find:

- Additional information on a selected text
- Detailed description of a term
- Word meaning
- Description of a movie
- Book information

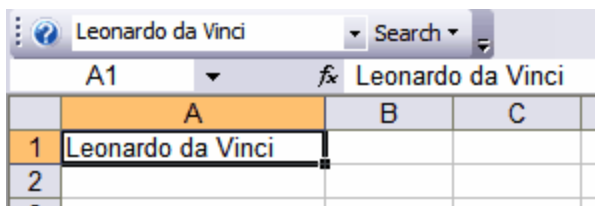
simply select text in Word or select a cell in Excel, click the appropriate search engine name, and the program will forward you to the search results.

1.2.2 Searching from Excel

Search From Office allows the user to search a text from the selected cell, as well as manually edit text.

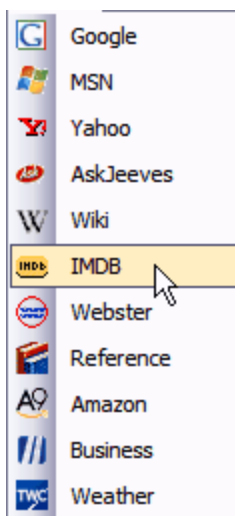
1. Select a cell with a certain value

Example



2. Click Search button and select appropriate search engine.

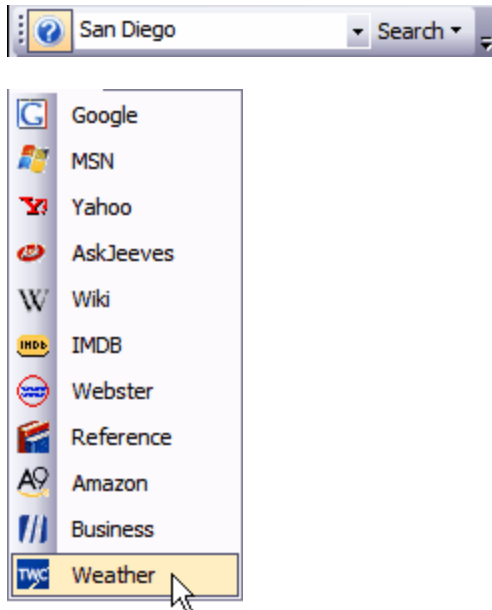
For example, if you want to find a movie on the topic, then choose IMDB



To modify search request:

1. Select edit box in the toolbar
2. Enter request text
3. Press Enter
4. Select required search engine

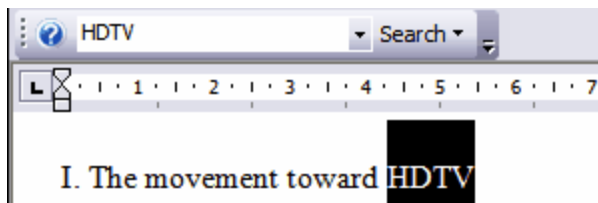
Example



1.2.3 Searching from Word

In Word, the software works much as it does in Excel; however, in Word, the user can search for selected text

1. Select any text. The software will automatically update the search box with the selected text.



2. Click Search button and select appropriate search engine.

For example, select Wiki to find a detailed description of the HDTV.



1.3 Getting Help

1.3.1 Help

The help file that comes with Search From Office contains complete documentation of all aspects of the program.

To display Help:

Choose Start » Programs » Search From Office » Help or press F1

-or-

Click the Help command in the Search From Office toolbar



1.3.2 Sending Feedback to Nimble Software

We love to hear from our customers. Send us your suggestions, ideas, and bug reports about Search From Office to support@nimblesoftware.com. Please include your e-mail address so that we can contact you if we have any questions.

If you want to get the latest information about Search From Office, please visit the Search From Office Homepage on the web.